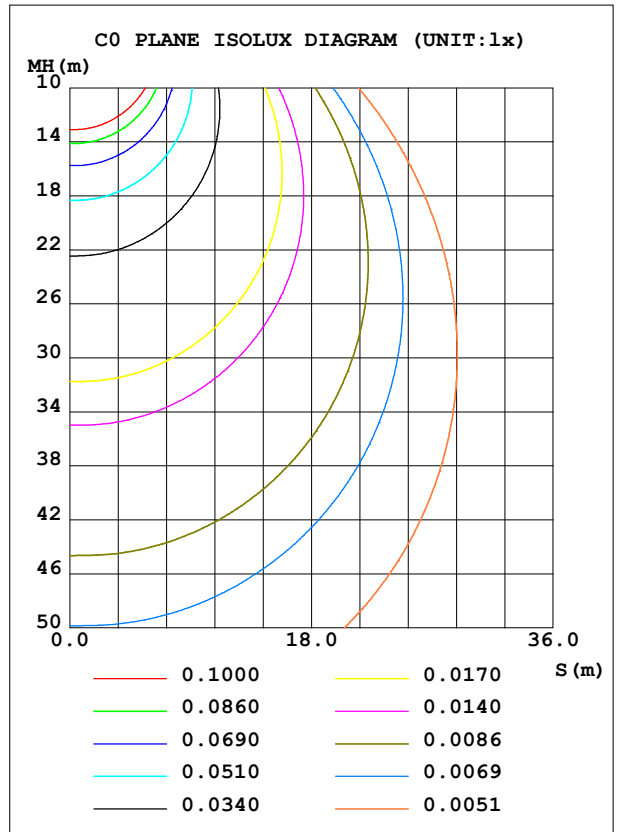
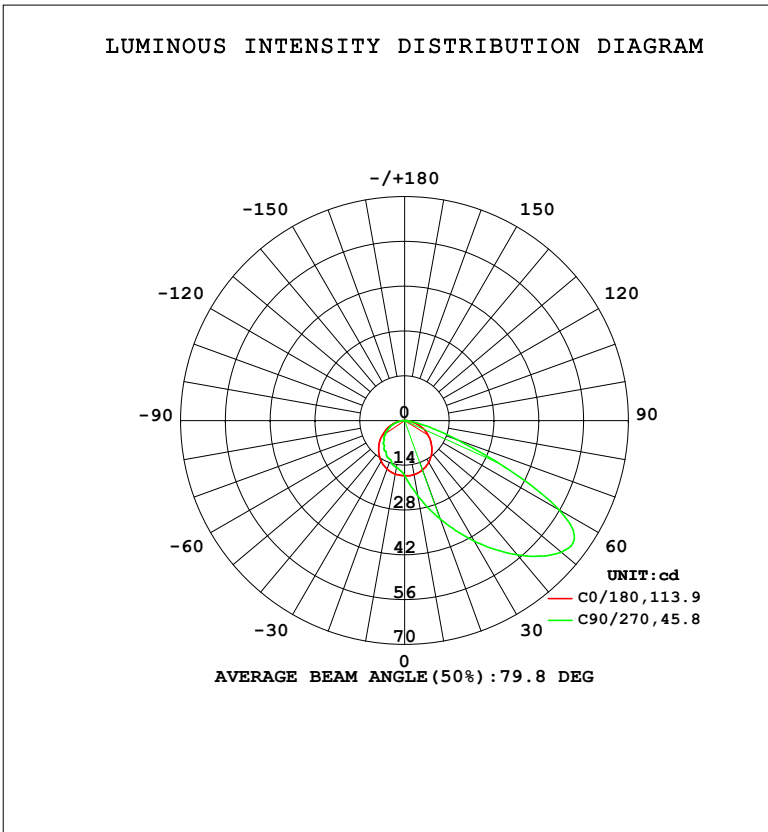


LUMINAIRE PHOTOMETRIC TEST REPORT

Test:U:24.090V I:0.1348A P:3.0923W PF:0.9521 Freq:59.98Hz		
UTHDi:0.00% ITHDi:0.00% KDisp:0 Lamp Flux:86.9835x1 lm		
NAME: LSD09-5CCT-24V-WH	TYPE:	WEIGHT:
SPEC.: 3000K	DIM.:	SERIAL No.:
MFR.: LTS	SUR.:	Shielding Angle:

DATA OF LAMP		PHOTOMETRIC DATA			
MODEL	LSD09-5CCT-24V-WH	Imax (cd)	65.14	S/MH (C0/180)	1.26
NOMINAL POWER (W)	2,5	LOR (%)	100.0	S/MH (C90/270)	1.04
RATED VOLTAGE (V)	24	TOTAL FLUX (lm)	86.984	η UP, DN (C0-180)	0.0,75.2
NOMINAL FLUX (lm)	86.9835	CIE CLASS	DIRECT	η UP, DN (C180-360)	0.0,24.8
LAMPS INSIDE	1	η up (%)	0.0	CIBSE SHR NOM	1.25
TEST VOLTAGE (V)	24	η down (%)	100.0	CIBSE SHR MAX	1.35



C Range: 0 - 360DEG
 C Interval: 22.5DEG
 Test Speed: HIGH
 Temperature: 24.3 °C
 Operators:
 Test Date: 2024-06-17

γ Range: 0 - 90DEG
 γ Interval: 1.0DEG
 Test System: EVERFINE GO-SPEX500_V1 SYSTEM V2.00.460
 Humidity: 65.0%
 Test Distance: 3.080m [K=1.0000]
 Remarks:

ZONAL FLUX DIAGRAM

ZONAL FLUX DIAGRAM:

γ	C0	C45	C90	C135	C180	C225	C270	C315	γ	Φ zone	Φ total	%lum, lamp
10	17.19	21.46	23.87	21.56	16.99	15.18	14.93	15.14	0- 10	1.702	1.702	1.96,1.96
20	16.46	26.38	32.81	26.87	16.16	14.03	13.03	14.09	10- 20	5.460	7.162	8.23,8.23
30	15.13	30.78	43.44	31.87	14.70	12.20	11.52	12.23	20- 30	9.666	16.83	19.3,19.3
40	13.24	33.59	54.78	35.22	12.69	10.34	10.03	10.38	30- 40	14.00	30.83	35.4,35.4
50	10.86	33.19	63.97	35.47	10.20	8.485	8.547	8.482	40- 50	17.64	48.46	55.7,55.7
60	8.185	27.28	55.72	29.86	7.413	6.405	6.220	6.501	50- 60	18.92	67.38	77.5,77.5
70	5.336	13.31	17.36	14.44	4.775	4.093	3.985	4.148	60- 70	13.40	80.78	92.9,92.9
80	2.232	3.063	3.105	2.985	2.082	1.800	1.875	1.816	70- 80	5.223	86.00	98.9,98.9
90	0.0101	0.0216	0.0172	0.0179	0.0015	0.0104	0.0177	0.0113	80- 90	0.9836	86.98	100,100
100									90-100			
110									100-110			
120									110-120			
130									120-130			
140									130-140			
150									140-150			
160									150-160			
170									160-170			
180									170-180			
DEG	LUMINOUS INTENSITY:cd									UNIT:lm		

Conical surface Flux(90deg): 39.276 lm

%lum = 45.2%

%lamp = 45.2%

Conical surface Flux(130deg): 75.263 lm

%lum = 86.5%

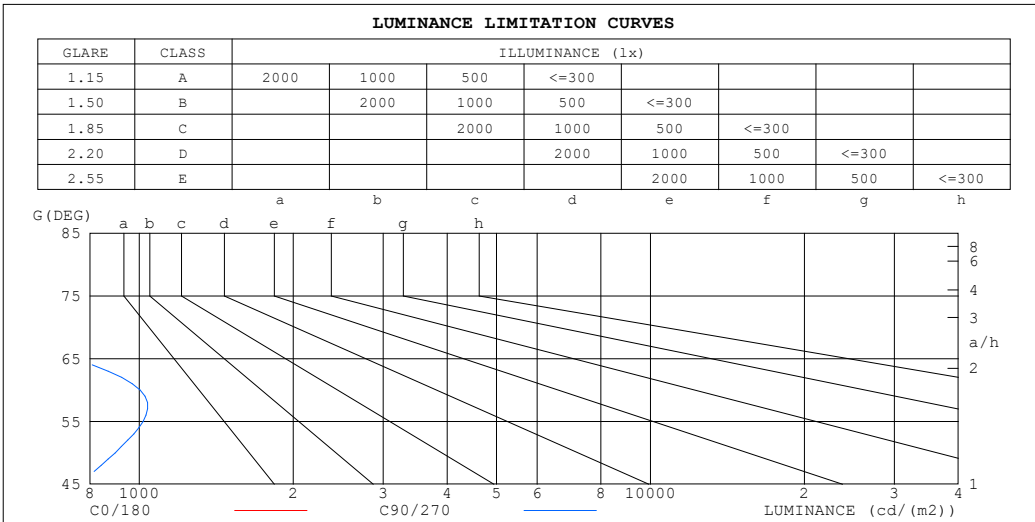
%lamp = 86.5%

C Range: 0 - 360DEG
 C Interval: 22.5DEG
 Test Speed: HIGH
 Temperature:24.3℃
 Operators:
 Test Date:2024-06-17

γ Range: 0 - 90DEG
 γ Interval: 1.0DEG
 Test System:EVERFINE GO-SPEX500_V1 SYSTEM V2.00.460
 Humidity:65.0%
 Test Distance:3.080m [K=1.0000]
 Remarks:

LUMINANCE LIMITATION CURVES

Test:U:24.090V I:0.1348A P:3.0923W PF:0.9521 Freq:59.98Hz UTHDi:0.00% ITHDi:0.00% KDisp:0 Lamp Flux:86.9835x1 lm		
NAME: LSD09-5CCT-24V-WH	TYPE:	WEIGHT:
SPEC.: 3000K	DIM.:	SERIAL No.:
MFR.: LTS	SUR.:	Shielding Angle:



LUMINANCE cd/(m2)		
G (DEG)	C0/180	C90/270
85	93	60
80	115	161
75	129	282
70	139	457
65	145	744
60	146	1004
55	149	1017
50	151	897
45	153	764

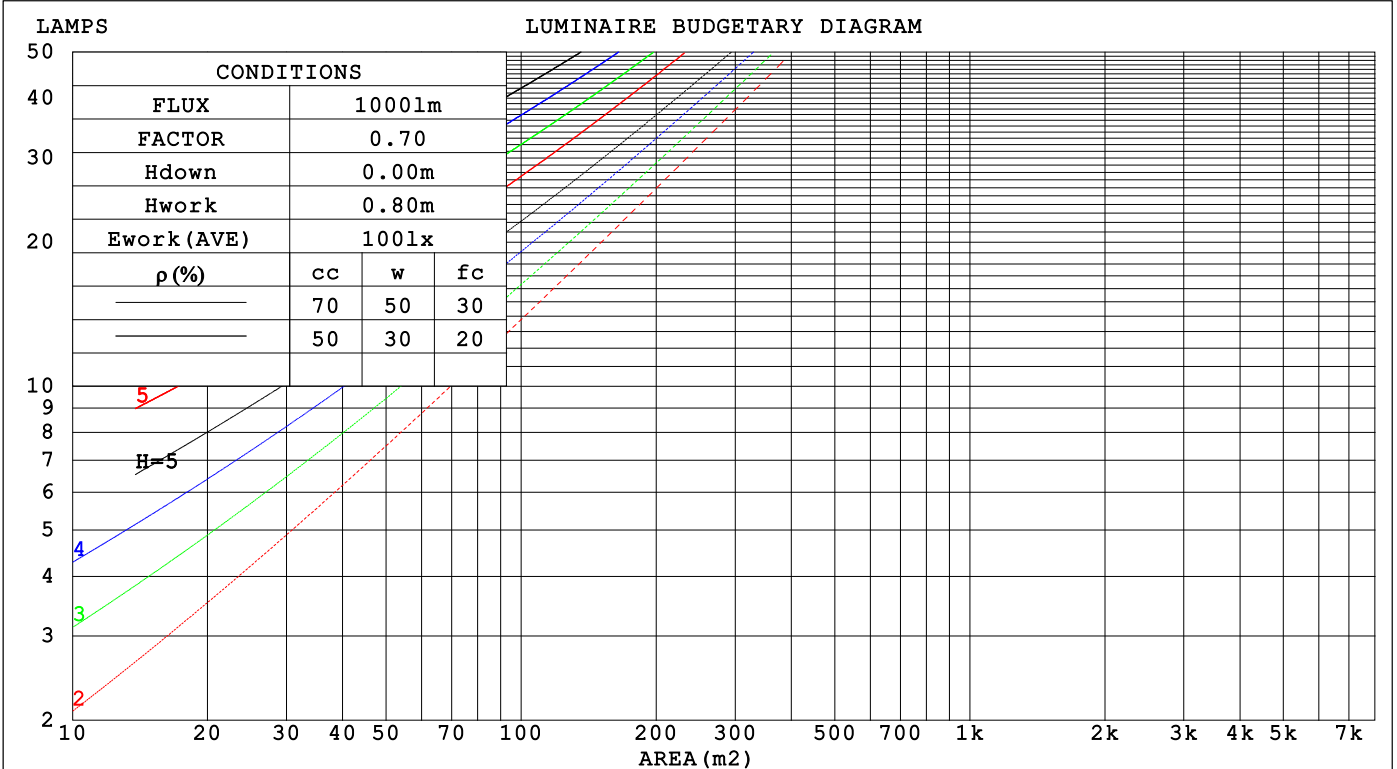
C Range: 0 - 360DEG
 C Interval: 22.5DEG
 Test Speed: HIGH
 Temperature: 24.3°C
 Operators:
 Test Date: 2024-06-17

γ Range: 0 - 90DEG
 γ Interval: 1.0DEG
 Test System: EVERFINE GO-SPEX500_V1 SYSTEM V2.00.460
 Humidity: 65.0%
 Test Distance: 3.080m [K=1.0000]
 Remarks:

CU AND LUMINAIRE BUDGETARY ESTIMATE DIAGRAM

Test:U:24.090V I:0.1348A P:3.0923W PF:0.9521 Freq:59.98Hz		
UTHdi:0.00% ITHdi:0.00% KDisp:0 Lamp Flux:86.9835x1 lm		
NAME: LSD09-5CCT-24V-WH	TYPE:	WEIGHT:
SPEC.: 3000K	DIM.:	SERIAL No.:
MFR.: LTS	SUR.:	Shielding Angle:

ρcc	80%			70%			50%			30%			10%			0
ρw	50%	30%	10%	50%	30%	10%	50%	30%	10%	50%	30%	10%	50%	30%	10%	0
ρfc	20%			20%			20%			20%			20%			0
RCR	RCR:Room Cavity Ratio															
	Coefficients of Utilization(CU)															
0.0	1.19	1.19	1.19	1.16	1.16	1.16	1.11	1.11	1.11	1.06	1.06	1.06	1.02	1.02	1.02	1.00
1.0	1.04	.99	.95	1.01	.97	.94	.97	.94	.91	.93	.90	.88	.89	.87	.85	.83
2.0	.89	.82	.76	.87	.81	.75	.84	.78	.73	.80	.76	.72	.77	.73	.70	.68
3.0	.77	.69	.62	.76	.68	.61	.73	.66	.60	.70	.64	.59	.67	.62	.58	.56
4.0	.67	.58	.51	.66	.57	.50	.63	.56	.50	.61	.54	.49	.59	.53	.48	.46
5.0	.59	.50	.43	.58	.49	.42	.56	.48	.42	.54	.47	.41	.52	.46	.41	.39
6.0	.53	.43	.36	.52	.43	.36	.50	.42	.36	.48	.41	.35	.46	.40	.35	.33
7.0	.47	.38	.31	.46	.37	.31	.45	.37	.31	.43	.36	.31	.42	.35	.30	.28
8.0	.43	.34	.27	.42	.33	.27	.40	.33	.27	.39	.32	.27	.38	.31	.27	.25
9.0	.39	.30	.24	.38	.30	.24	.37	.29	.24	.36	.29	.24	.35	.28	.24	.22
10.0	.35	.27	.21	.35	.27	.21	.34	.26	.21	.33	.26	.21	.32	.26	.21	.19



C Range: 0 - 360DEG
 C Interval: 22.5DEG
 Test Speed: HIGH
 Temperature:24.3°C
 Operators:
 Test Date:2024-06-17

γ Range: 0 - 90DEG
 γ Interval: 1.0DEG
 Test System:EVERFINE GO-SPEX500_V1 SYSTEM V2.00.460
 Humidity:65.0%
 Test Distance:3.080m [K=1.0000]
 Remarks:

WEC AND CCEC

Test:U:24.090V I:0.1348A P:3.0923W PF:0.9521 Freq:59.98Hz		
UTHDi:0.00% ITHDi:0.00% KDisp:0 Lamp Flux:86.9835x1 lm		
NAME: LSD09-5CCT-24V-WH	TYPE:	WEIGHT:
SPEC.: 3000K	DIM.:	SERIAL No.:
MFR.: LTS	SUR.:	Shielding Angle:

ρ_{CC}	80%			70%			50%			30%			10%			0
ρ_w	50%	30%	10%	50%	30%	10%	50%	30%	10%	50%	30%	10%	50%	30%	10%	0
ρ_{fc}	20%			20%			20%			20%			20%			0
RCR	RCR:Room Cavity Ratio						Wall Exitance Coefficients(WEC)									
0.0																
1.0	.316	.180	.057	.309	.176	.056	.296	.170	.054	.284	.164	.052	.272	.158	.051	
2.0	.304	.167	.051	.298	.164	.051	.286	.159	.049	.275	.154	.048	.265	.150	.047	
3.0	.284	.151	.045	.279	.149	.045	.268	.145	.044	.258	.142	.043	.249	.138	.043	
4.0	.263	.137	.040	.258	.135	.040	.249	.132	.039	.240	.129	.039	.232	.126	.038	
5.0	.244	.124	.036	.239	.123	.036	.231	.120	.035	.223	.118	.035	.216	.115	.035	
6.0	.226	.113	.032	.222	.112	.032	.215	.110	.032	.208	.108	.032	.201	.106	.031	
7.0	.210	.104	.029	.206	.103	.029	.200	.101	.029	.194	.099	.029	.188	.097	.029	
8.0	.196	.096	.027	.193	.095	.027	.187	.093	.027	.181	.092	.026	.176	.090	.026	
9.0	.183	.089	.025	.180	.088	.025	.175	.086	.025	.170	.085	.024	.165	.084	.024	
10.0	.172	.082	.023	.169	.082	.023	.164	.081	.023	.160	.079	.023	.155	.078	.022	

ρ_{CC}	80%			70%			50%			30%			10%			0
ρ_w	50%	30%	10%	50%	30%	10%	50%	30%	10%	50%	30%	10%	50%	30%	10%	0
ρ_{fc}	20%			20%			20%			20%			20%			0
RCR	RCR:Room Cavity Ratio						Ceiling Cavity Exitance Coefficients(CCEC)									
0.0	.190	.190	.190	.163	.163	.163	.111	.111	.111	.064	.064	.064	.020	.020	.020	
1.0	.181	.156	.134	.155	.134	.115	.106	.092	.080	.061	.053	.046	.020	.017	.015	
2.0	.174	.132	.097	.149	.113	.083	.102	.079	.058	.059	.046	.034	.019	.015	.011	
3.0	.167	.114	.072	.143	.099	.063	.098	.069	.044	.057	.040	.026	.018	.013	.008	
4.0	.160	.101	.056	.138	.088	.049	.095	.061	.034	.055	.036	.020	.018	.012	.007	
5.0	.153	.091	.045	.132	.079	.039	.091	.055	.028	.053	.032	.016	.017	.011	.005	
6.0	.146	.083	.037	.126	.072	.033	.087	.050	.023	.050	.030	.014	.016	.010	.005	
7.0	.140	.076	.032	.120	.066	.028	.083	.046	.020	.048	.027	.012	.016	.009	.004	
8.0	.133	.070	.027	.115	.061	.024	.079	.043	.017	.046	.025	.010	.015	.008	.003	
9.0	.127	.066	.024	.109	.057	.021	.076	.040	.015	.044	.024	.009	.014	.008	.003	
10.0	.121	.061	.022	.104	.053	.019	.072	.037	.013	.042	.022	.008	.014	.007	.003	

C Range: 0 - 360DEG
 C Interval: 22.5DEG
 Test Speed: HIGH
 Temperature:24.3°C
 Operators:
 Test Date:2024-06-17

γ Range: 0 - 90DEG
 γ Interval: 1.0DEG
 Test System:EVERFINE GO-SPEX500_V1 SYSTEM V2.00.460
 Humidity:65.0%
 Test Distance:3.080m [K=1.0000]
 Remarks:

UGR(Unified Glare Rating) Table

Test:U:24.090V I:0.1348A P:3.0923W PF:0.9521 Freq:59.98Hz UTHDi:0.00% ITHDi:0.00% KDisp:0 Lamp Flux:86.9835x1 lm		
NAME: LSD09-5CCT-24V-WH	TYPE:	WEIGHT:
SPEC.: 3000K	DIM.:	SERIAL No.:
MFR.: LTS	SUR.:	Shielding Angle:

ceiling/cavity	0.7	0.7	0.5	0.5	0.3	0.7	0.7	0.5	0.5	0.3
walls	0.5	0.3	0.5	0.3	0.3	0.5	0.3	0.5	0.3	0.3
working plane	0.2	0.2	0.2	0.2	0.2	0.2	0.2	0.2	0.2	0.2

Room dimensions	Viewed crosswise					Viewed endwise				
x = 2H y = 2H	17.0	18.6	17.3	18.8	19.0	24.6	26.2	24.8	26.4	26.6
3H	17.9	19.4	18.2	19.6	19.9	25.5	27.0	25.8	27.2	27.5
4H	18.2	19.6	18.5	19.8	20.1	25.6	27.0	25.9	27.2	27.5
6H	18.3	19.7	18.7	20.0	20.2	25.5	26.9	25.9	27.1	27.4
8H	18.4	19.7	18.7	20.0	20.3	25.5	26.8	25.8	27.1	27.4
12H	18.4	19.6	18.7	19.9	20.2	25.4	26.7	25.8	27.0	27.3
4H 2H	19.2	20.7	19.6	20.9	21.2	24.6	26.1	25.0	26.3	26.6
3H	20.1	21.3	20.4	21.6	21.9	25.7	26.9	26.0	27.2	27.5
4H	20.3	21.5	20.7	21.8	22.1	25.8	26.9	26.2	27.3	27.6
6H	20.5	21.5	20.9	21.9	22.2	25.9	26.9	26.3	27.2	27.6
8H	20.6	21.5	21.0	21.9	22.2	25.8	26.8	26.2	27.1	27.5
12H	20.6	21.4	21.0	21.8	22.2	25.8	26.6	26.2	27.0	27.4
8H 4H	20.7	21.6	21.1	22.0	22.4	25.8	26.7	26.2	27.1	27.5
6H	21.0	21.7	21.4	22.1	22.6	25.9	26.6	26.3	27.0	27.5
8H	21.1	21.7	21.5	22.2	22.6	25.8	26.5	26.3	26.9	27.4
12H	21.1	21.7	21.6	22.1	22.6	25.8	26.4	26.3	26.8	27.3
12H 4H	20.7	21.5	21.1	21.9	22.3	25.7	26.6	26.2	27.0	27.4
6H	21.0	21.7	21.4	22.1	22.5	25.8	26.5	26.3	26.9	27.4
8H	21.1	21.7	21.6	22.1	22.6	25.8	26.4	26.3	26.9	27.3

Variations with the observer position at spacings(CIE Pub.117):		
S = 1.0H	+ 0.4 / - 0.5	+ 0.1 / - 0.1
1.5H	+ 0.4 / - 0.4	+ 0.7 / - 0.6
2.0H	+ 1.2 / - 1.6	+ 1.5 / - 2.7

CIE Pub.117, 86.98 lm Total Lamp Luminous Flux Correct (8log(F/F0) = -8.5)
Area: 0.111 m2

C Range: 0 - 360DEG	γ Range: 0 - 90DEG
C Interval: 22.5DEG	γ Interval: 1.0DEG
Test Speed: HIGH	Test System:EVERFINE GO-SPEX500_V1 SYSTEM V2.00.460
Temperature:24.3℃	Humidity:65.0%
Operators:	Test Distance:3.080m [K=1.0000]
Test Date:2024-06-17	Remarks:

UTILIZATION FACTORS TABLE

Test:U:24.090V I:0.1348A P:3.0923W PF:0.9521 Freq:59.98Hz UTHDi:0.00% ITHDi:0.00% KDisp:0 Lamp Flux:86.9835x1 lm		
NAME: LSD09-5CCT-24V-WH	TYPE:	WEIGHT:
SPEC.: 3000K	DIM.:	SERIAL No.:
MFR.: LTS	SUR.:	Shielding Angle:

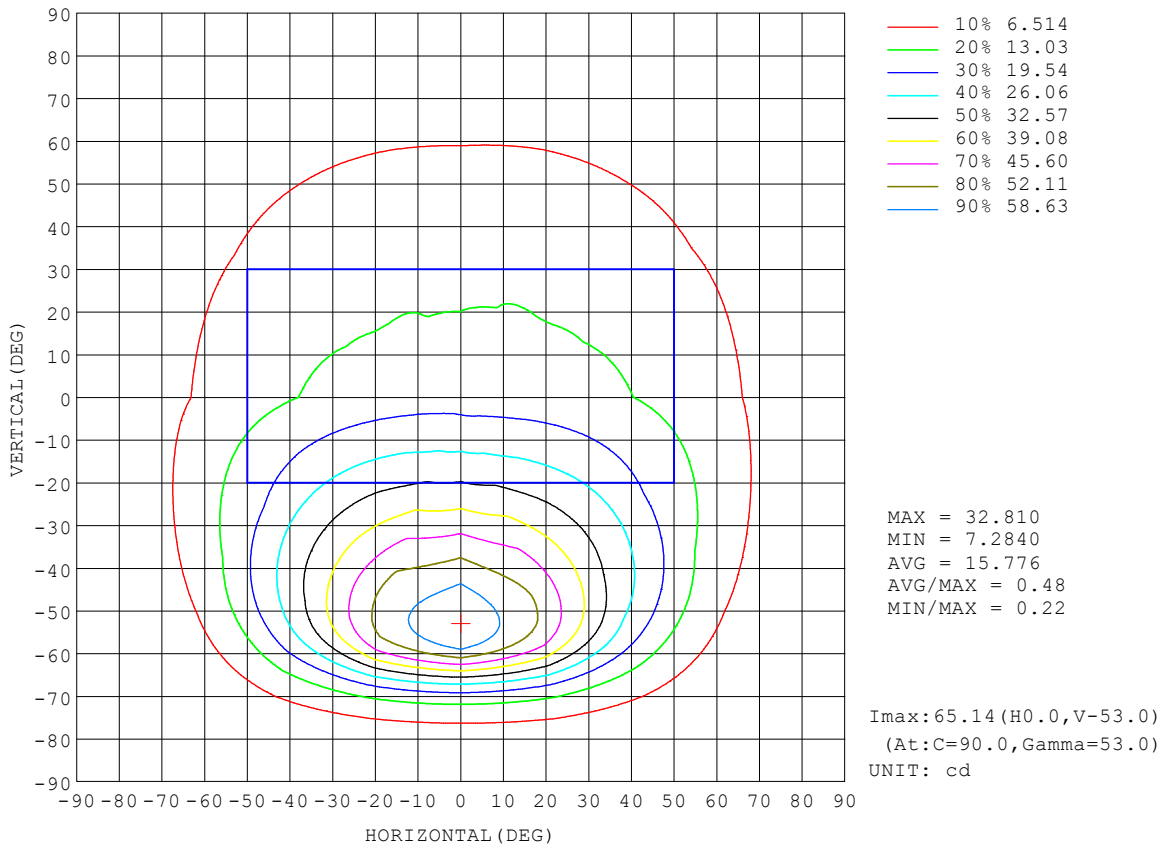
REFLECTANCE										
Ceiling	0.8	0.8	0.8	0.7	0.7	0.7	0.5	0.5	0.5	0
Walls	0.7	0.5	0.3	0.7	0.5	0.3	0.7	0.5	0.3	0
Working plane	0.2	0.2	0.2	0.2	0.2	0.2	0.2	0.2	0.2	0
ROOM INDEX	UTILIZATION FACTORS (PERCENT) $k(RI) \times RCR = 5$									
$k = 0.60$	51	39	31	51	39	31	49	38	31	24
0.80	62	50	42	61	49	41	59	48	41	33
1.00	72	60	52	71	59	52	68	61	51	43
1.25	80	68	61	78	68	60	75	66	59	52
1.50	85	75	67	84	74	67	80	72	66	58
2.00	93	84	77	91	83	76	88	81	75	67
2.50	98	89	83	95	88	82	91	85	80	71
3.00	101	94	88	99	92	87	95	89	85	76
4.00	106	100	95	103	98	93	99	94	91	82
5.00	108	103	99	106	101	97	101	97	94	85
ROOM INDEX	UF(total)									Direct
According to DIN EN 13032-2 2004			Suspended				SHRNOM = 1.25			

C Range: 0 - 360DEG
 C Interval: 22.5DEG
 Test Speed: HIGH
 Temperature: 24.3°C
 Operators:
 Test Date: 2024-06-17

γ Range: 0 - 90DEG
 γ Interval: 1.0DEG
 Test System: EVERFINE GO-SPEX500_V1 SYSTEM V2.00.460
 Humidity: 65.0%
 Test Distance: 3.080m [K=1.0000]
 Remarks:

ISOCANDELA DIAGRAM

Test:U:24.090V I:0.1348A P:3.0923W PF:0.9521 Freq:59.98Hz UTHDi:0.00% ITHDi:0.00% KDisp:0 Lamp Flux:86.9835x1 lm		
NAME: LSD09-5CCT-24V-WH	TYPE:	WEIGHT:
SPEC.: 3000K	DIM.:	SERIAL No.:
MFR.: LTS	SUR.:	Shielding Angle:

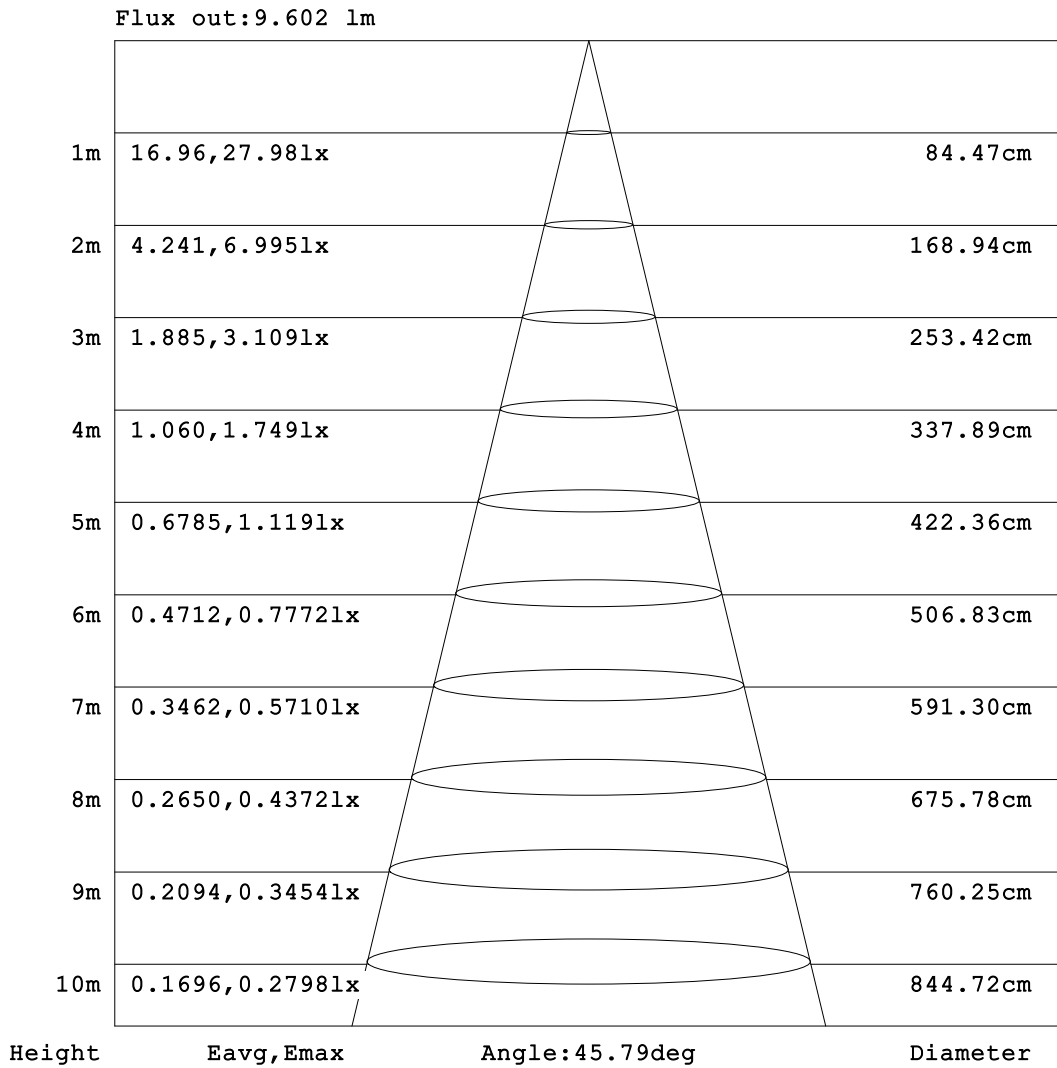


C Range: 0 - 360DEG
 C Interval: 22.5DEG
 Test Speed: HIGH
 Temperature: 24.3°C
 Operators:
 Test Date: 2024-06-17

γ Range: 0 - 90DEG
 γ Interval: 1.0DEG
 Test System: EVERFINE GO-SPEX500_V1 SYSTEM V2.00.460
 Humidity: 65.0%
 Test Distance: 3.080m [K=1.0000]
 Remarks:

AAI Figure

Test:U:24.090V I:0.1348A P:3.0923W PF:0.9521 Freq:59.98Hz UTHDi:0.00% ITHDi:0.00% KDisp:0 Lamp Flux:86.9835x1 lm		
NAME: LSD09-5CCT-24V-WH	TYPE:	WEIGHT:
SPEC.: 3000K	DIM.:	SERIAL No.:
MFR.: LTS	SUR.:	Shielding Angle:



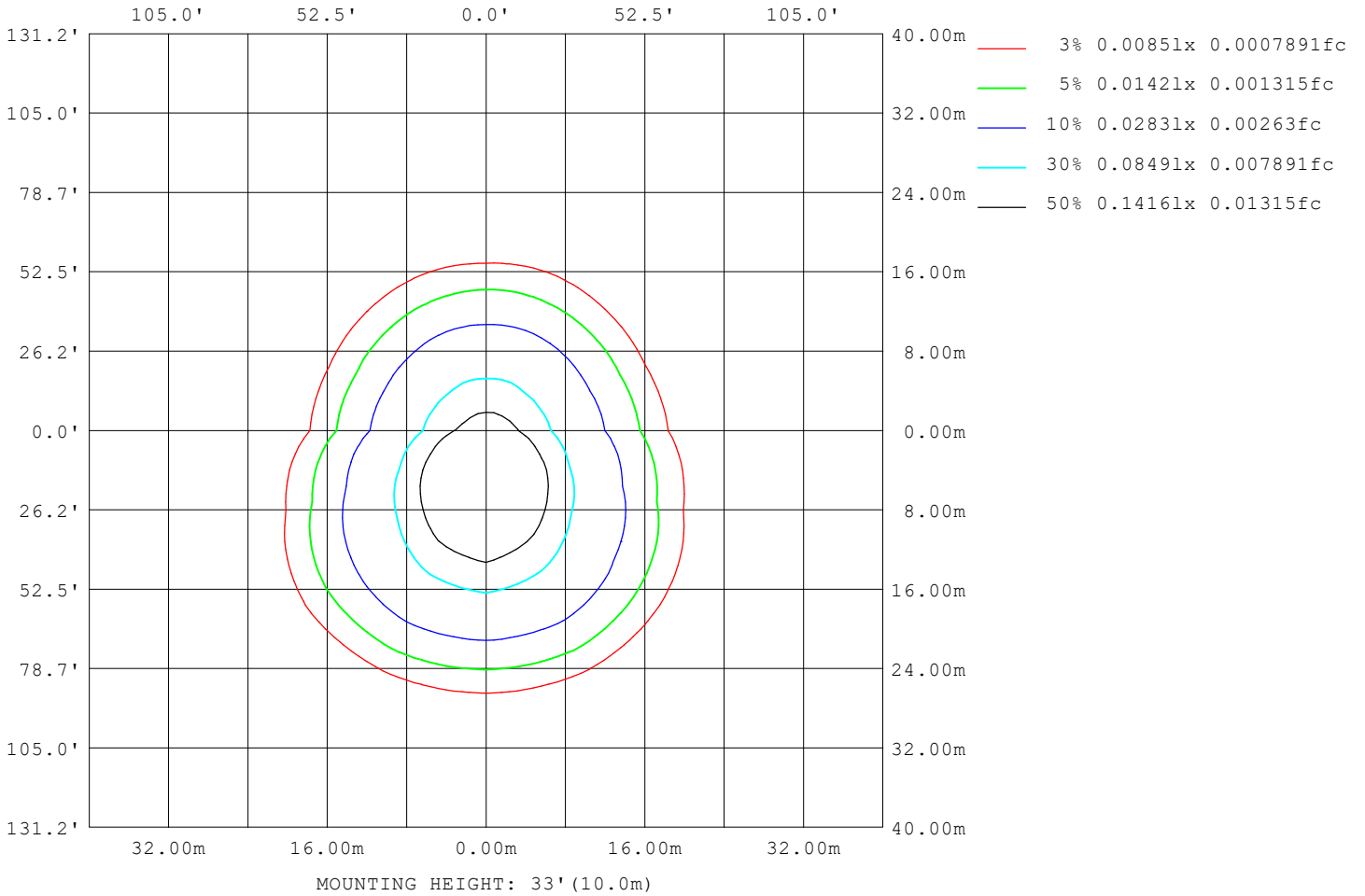
Note: The Curves indicate the illuminated area and the average illumination when the luminaire is at different distance.

C Range: 0 - 360DEG
C Interval: 22.5DEG
Test Speed: HIGH
Temperature: 24.3°C
Operators:
Test Date: 2024-06-17

γ Range: 0 - 90DEG
γ Interval: 1.0DEG
Test System: EVERFINE GO-SPEX500_V1 SYSTEM V2.00.460
Humidity: 65.0%
Test Distance: 3.080m [K=1.0000]
Remarks:

ISOLUX DIAGRAM

Test:U:24.090V I:0.1348A P:3.0923W PF:0.9521 Freq:59.98Hz UTHDi:0.00% ITHDi:0.00% KDisp:0 Lamp Flux:86.9835x1 lm		
NAME: LSD09-5CCT-24V-WH	TYPE:	WEIGHT:
SPEC.: 3000K	DIM.:	SERIAL No.:
MFR.: LTS	SUR.:	Shielding Angle:



C Range: 0 - 360DEG
 C Interval: 22.5DEG
 Test Speed: HIGH
 Temperature:24.3°C
 Operators:
 Test Date:2024-06-17

γ Range: 0 - 90DEG
 γ Interval: 1.0DEG
 Test System:EVERFINE GO-SPEX500_V1 SYSTEM V2.00.460
 Humidity:65.0%
 Test Distance:3.080m [K=1.0000]
 Remarks:

LED Avg.L Report

Test:U:24.090V I:0.1348A P:3.0923W PF:0.9521 Freq:59.98Hz UTHDi:0.00% ITHDi:0.00% KDisp:0 Lamp Flux:86.9835x1 lm		
NAME: LSD09-5CCT-24V-WH	TYPE:	WEIGHT:
SPEC.: 3000K	DIM.:	SERIAL No.:
MFR.: LTS	SUR.:	Shielding Angle:

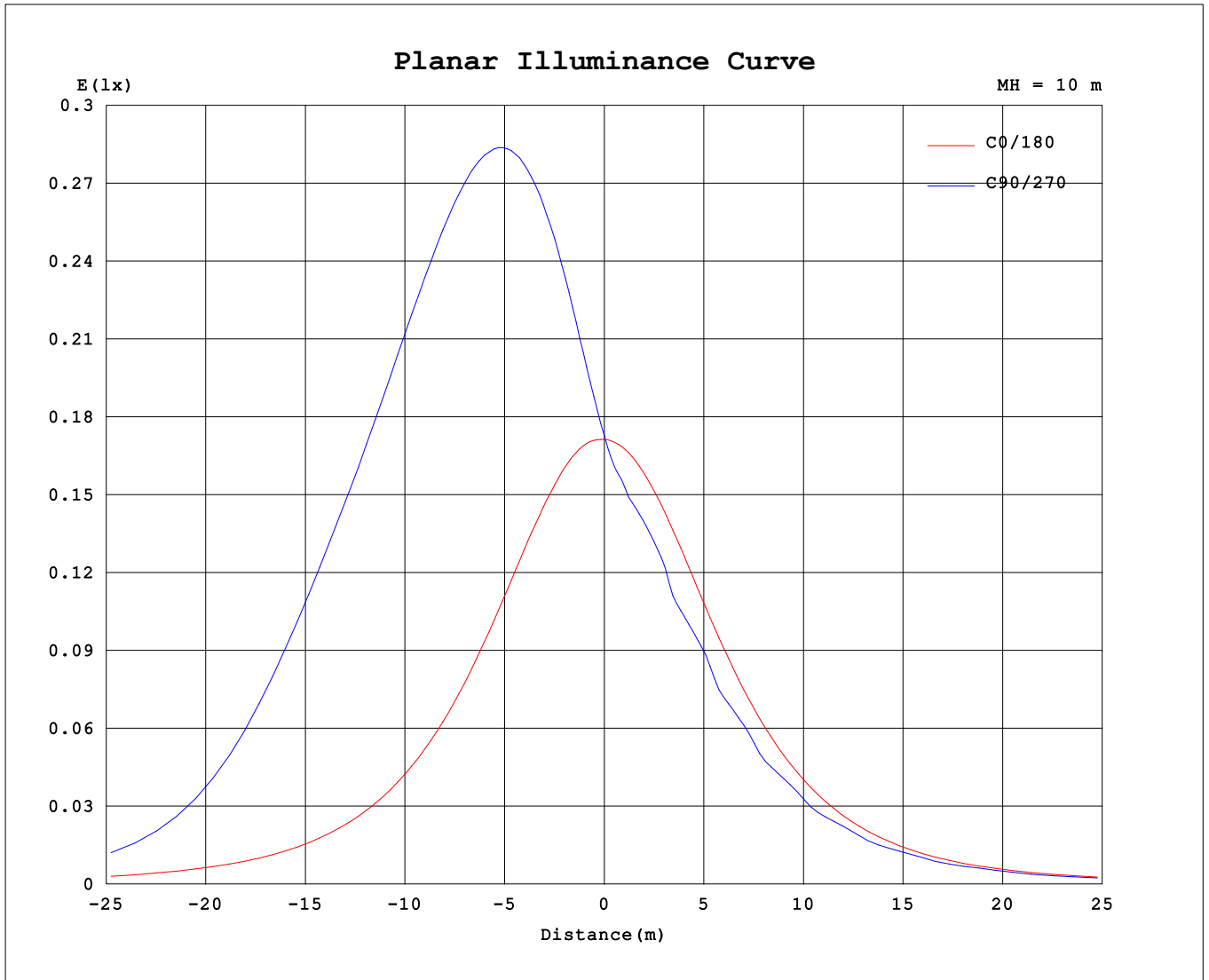
AvgL	cd/m2
L_0~180 (65) av	138
L_0~180 (75) av	124
L_0~180 (85) av	93
L_90~270 (65) av	427
L_90~270 (75) av	191
L_90~270 (85) av	72
L_45 (65) av	293
L_45 (75) av	173
L_45 (85) av	78

Standard: GB/T 29293-2012

C Range: 0 - 360DEG
 C Interval: 22.5DEG
 Test Speed: HIGH
 Temperature:24.3℃
 Operators:
 Test Date:2024-06-17

γ Range: 0 - 90DEG
 γ Interval: 1.0DEG
 Test System:EVERFINE GO-SPEX500_V1 SYSTEM V2.00.460
 Humidity:65.0%
 Test Distance:3.080m [K=1.0000]
 Remarks:

Planar Illuminance Curve



C Range: 0 - 360DEG
 C Interval: 22.5DEG
 Test Speed: HIGH
 Temperature: 24.3 °C
 Operators:
 Test Date: 2024-06-17

γ Range: 0 - 90DEG
 γ Interval: 1.0DEG
 Test System: EVERFINE GO-SPEX500_V1 SYSTEM V2.00.460
 Humidity: 65.0%
 Test Distance: 3.080m [K=1.0000]
 Remarks:

LUMINOUS DISTRIBUTION INTENSITY DATA

Test:U:24.090V I:0.1348A P:3.0923W PF:0.9521 Freq:59.98Hz UTHDi:0.00% ITHDi:0.00% KDisp:0 Lamp Flux:86.9835x1 lm		
NAME: LSD09-5CCT-24V-WH	TYPE:	WEIGHT:
SPEC.: 3000K	DIM.:	SERIAL No.:
MFR.: LTS	SUR.:	Shielding Angle:

Table--1

UNIT: cd

C (DEG) \ γ (DEG)	0	22.5	45	67.5	90	112.5	135	157.5	180	202.5	225	247.5	270	292.5	315	337.5			
0	17.3	17.3	17.3	17.3	17.3	17.3	17.3	17.3	17.3	17.3	17.3	17.3	17.3	17.3	17.3	17.3			
5	17.3	18.3	19.2	19.9	20.1	19.9	19.2	18.2	17.2	16.4	16.0	15.9	15.8	15.8	16.0	16.5			
10	17.2	19.2	21.5	23.2	23.9	23.2	21.6	19.2	17.0	15.8	15.2	15.1	14.9	15.0	15.1	15.8			
15	16.9	20.2	23.9	26.9	28.1	27.1	24.2	20.2	16.7	15.0	14.7	14.5	14.3	14.5	14.7	15.2			
20	16.5	20.9	26.4	31.0	32.8	31.3	26.9	21.1	16.2	14.4	14.0	13.2	13.0	13.4	14.1	14.4			
25	15.9	21.5	28.7	35.2	38.0	35.8	29.5	21.8	15.5	13.8	12.8	12.7	12.7	12.8	13.2	13.8			
30	15.1	21.8	30.8	39.5	43.4	40.5	31.9	22.2	14.7	13.0	12.2	11.9	11.5	12.1	12.2	13.0			
35	14.2	21.7	32.5	43.8	49.1	45.1	33.8	22.2	13.8	12.1	11.6	11.1	11.2	11.2	11.6	12.2			
40	13.2	21.3	33.6	47.7	54.8	49.5	35.2	21.9	12.7	10.8	10.3	10.01	10.0	10.2	10.4	11.2			
45	12.1	20.4	33.9	50.8	60.0	53.0	35.9	21.0	11.5	9.86	9.61	9.53	9.31	9.55	9.70	9.96			
50	10.9	19.0	33.2	52.7	64.0	55.2	35.5	19.7	10.2	8.88	8.48	8.37	8.55	8.37	8.48	9.01			
55	9.54	17.0	31.2	52.2	64.7	54.7	33.7	17.7	8.83	7.59	7.35	7.26	7.38	7.40	7.56	7.91			
60	8.19	14.4	27.3	46.3	55.7	48.3	29.9	15.1	7.41	6.53	6.40	6.35	6.22	6.46	6.50	6.70			
65	6.85	11.4	21.1	31.9	34.9	32.8	23.4	11.8	6.10	5.30	5.28	5.28	5.13	5.36	5.32	5.50			
70	5.34	8.12	13.3	16.9	17.4	16.9	14.4	8.17	4.78	4.11	4.09	4.09	3.99	4.16	4.15	4.30			
75	3.74	5.07	6.95	8.09	8.10	7.91	7.13	4.93	3.40	2.94	2.87	2.85	2.88	2.91	2.93	3.07			
80	2.23	2.63	3.06	3.29	3.11	3.13	2.98	2.50	2.08	1.82	1.80	1.77	1.88	1.78	1.82	1.87			
85	0.91	0.91	0.77	0.64	0.58	0.61	0.74	0.91	0.90	0.79	0.75	0.80	0.82	0.82	0.75	0.76			
90	0.01	0.01	0.02	0.02	0.02	0.02	0.02	0.02	0.00	0.01	0.01	0.01	0.02	0.02	0.01	0.01			

C Range: 0 - 360DEG
 C Interval: 22.5DEG
 Test Speed: HIGH
 Temperature:24.3℃
 Operators:
 Test Date:2024-06-17

γ Range: 0 - 90DEG
 γ Interval: 1.0DEG
 Test System:EVERFINE GO-SPEX500_V1 SYSTEM V2.00.460
 Humidity:65.0%
 Test Distance:3.080m [K=1.0000]
 Remarks: